

Alcázar Garden

Our garden celebrates the Centennial of the Panama-California Exposition in Balboa Park with a recreation of the Alcázar Garden, originally designed by Richard Requa in 1935.

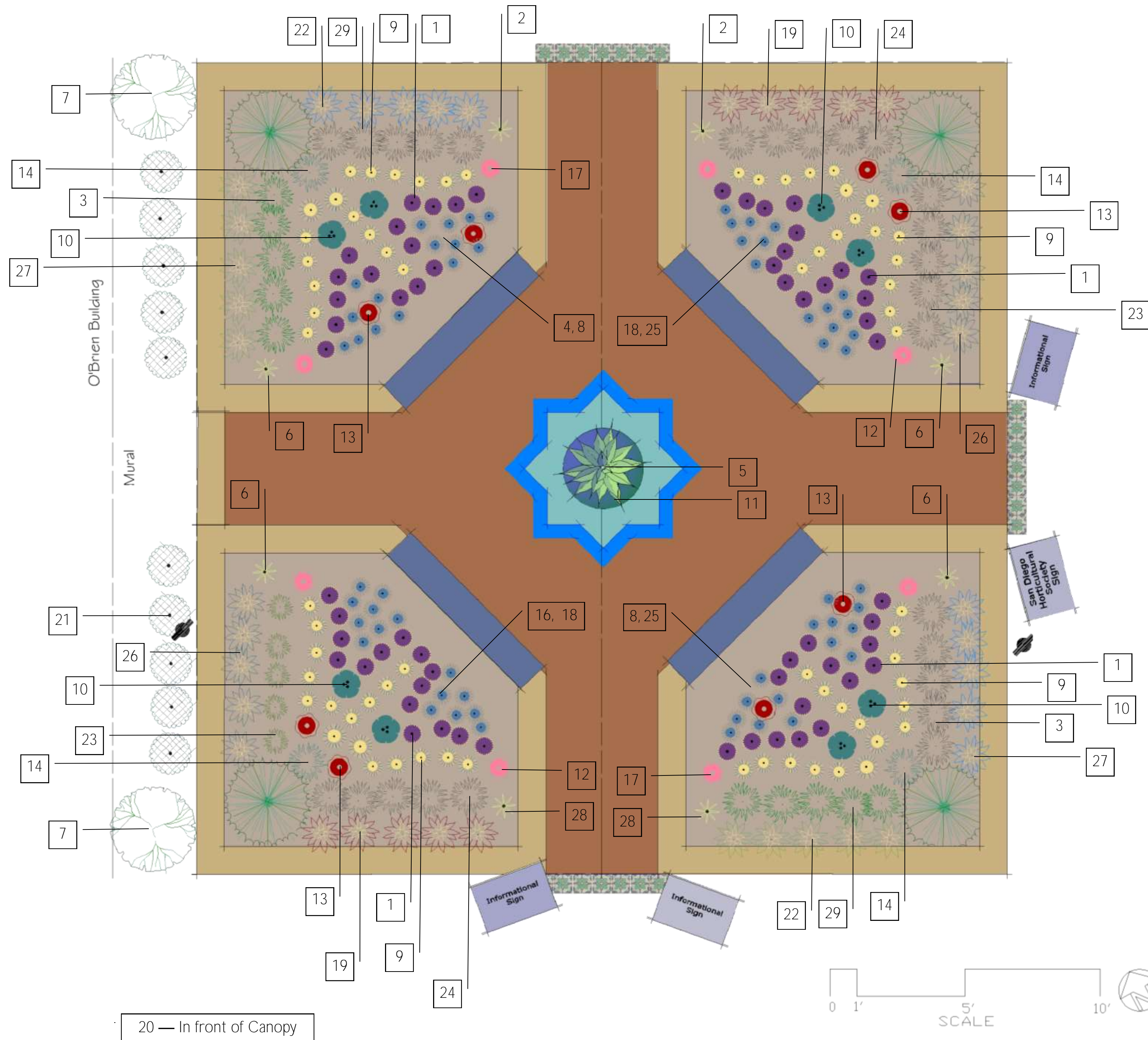
This tranquil garden demonstrates the principles of water conservation, low maintenance, sustainability and climate appropriate plants.

We've replaced the annual bedding plants from the inspiration garden with a tapestry of low-water plants. In the center of the garden the waterless fountain uses a large blue pot filled with succulents.

Water-thrifty plants are an excellent choice for home gardens. They are low maintenance, often with colorful foliage that provides year-round color. They thrive in our Mediterranean climate, and are not as susceptible to pests. Their flowers attract hummingbirds and butterflies to the garden.

Plant List

| # | Botanical Name | Common Name |
|----|--|---------------------------------------|
| 1 | <i>Aeonium 'Zwartkop'</i> | Large Purple Aeonium |
| 2 | <i>Agave lophantha 'Quadricolor'</i> | Quadricolor Century Plant |
| 3 | <i>Arctostaphylos 'John Dourley'</i> | Manzanita |
| 4 | <i>Artemisia pycnocephala</i> | David's Choice |
| 5 | <i>Beaucarnea recurvata</i> | Bottle Palm |
| 6 | <i>Beschorneria yuccoides 'Flamingo Glow'</i> | Variegated Red Yucca |
| 7 | <i>Cercis mexicana</i> | Mexican Redbud |
| 8 | <i>Cotyledon</i> | ChalkFingers |
| 9 | <i>Crassula argentea 'Sunset'</i> | Golden Jade |
| 10 | <i>Echeveria</i> | Hybrid Echeveria |
| 11 | <i>Echeveria harmsiis</i> | Fuzzy Echeveria |
| 12 | <i>Euphorbia milii 'Pink'</i> | Pink Crown of Thorns |
| 13 | <i>Euphorbia milii 'Red'</i> | Red Crown of Thorns |
| 14 | <i>Galvezia speciosa</i> | Island Bush Snapdragon |
| 15 | <i>Helichrysum</i> | Frosted Berries |
| 16 | <i>Helichrysum italicum</i> | CurryPlant |
| 17 | <i>Kalanchoe blossfeldiana</i> | Garden Kalanchoe |
| 18 | <i>Kalanchoe pumila</i> | Purple & Power |
| 19 | <i>Leucadendron 'Silvan Red'</i> | Leucadendron |
| 20 | <i>Lyonothamnus floribundus</i> | Catalina IronWood |
| 21 | <i>Metrosideros excelsus</i> | Variegated New Zealand Christmas Tree |
| 22 | <i>Salvia chamaedryoides</i> | Germander Sage |
| 23 | <i>Salvia leucophylla 'Point Sal Spreader'</i> | Purple Sage |
| 24 | <i>Santolina chamaecyparissus</i> | Grey Lavendar Cotton |
| 25 | <i>Tanacetum densum var. amanum</i> | Turkish Tansy |
| 26 | <i>Westringia fruticosa 'Blue Gem'</i> | Coast Rosemary |
| 27 | <i>Westringia fruticosa 'Morning Light'</i> | Variegated Coast Rosemary |
| 28 | <i>Yucca filamentosa 'Bright Edge'</i> | Variegated Yucca |
| 29 | <i>Zauschneria californica</i> | California Fuchsia |



Garden Design and Signage
Jim Bishop

Garden Installation

Marilyn's Garden Design

Marilyn Guidroz
marilyngardendesign.com

MiraCosta College
Horticultural Program Students:
Julia Coleman
Trisha Haslam
Allison (Sanford) Miles
Deborah Read-Ostner
Eri Sudo

Garden Benches

Terry Allen Gardner Creative Services
graphicman_sd@yahoo.com

Wall Mural

Ed Roxburgh
edroxburghart.com

Plant Suppliers

Armstrong Garden Centers
armstronggarden.com

Briggs Nursery & Tree Co. Inc.
briggstree.com

Home Depot

Oasis Water Efficient Gardens
oasis-plants.com

Waterwise Botanicals
waterwisebotanicals.com

Pottery

Backyard X-Scapes
backyardxscapes.com

Sponsored by:



sdcwa.org



WaterSmartSD.org



Supported by the San Diego County Water Authority and its 24 member agencies through a grant from the State Department of Water Resources



Let's Talk Plants!

sdhort.org

